

# Annex D

Mello Aff #2, Par 12a

## FY 2011 Biennial Plan and Budget Assessment on the Modernization and Refurbishment of the Nuclear Security Complex



May 2010

National Nuclear Security Administration  
United States Department of Energy  
1000 Independence Avenue, SW  
Washington, D.C. 20585



U.S. DEPARTMENT OF  
**ENERGY**



## Consolidated Waste Capability

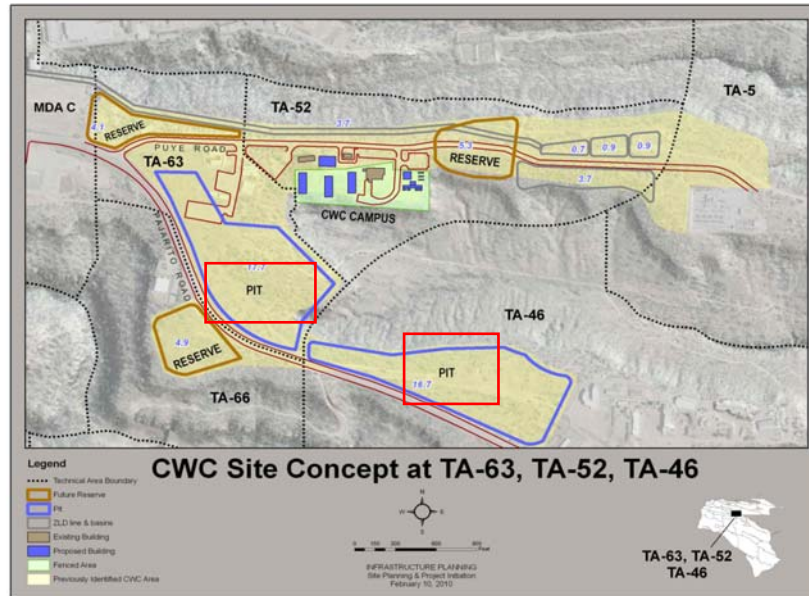


Figure D-11. Site overlay of the Consolidated Waste Capability for addressing TRU, Low Level and Mixed Low Level radioactive waste.

The waste facilities are an integral part of conducting plutonium programs in the system of nuclear facilities. The Consolidated Waste Capability includes the transuranic (TRU) Waste Facility project for solid transuranic waste and associated facilities for hazardous waste, low level waste and mixed low level waste.

The waste facilities are all a part of the larger system of nuclear facilities used to assess, surveil, manufacture, and/or refurbish plutonium components used in nuclear weapons. There is a limited ability to stage waste and therefore plutonium programmatic operations such as surveillance and manufacturing would be interrupted without the facilities required to process and dispose of waste on a timely basis.

The overall strategy is to upgrade existing facilities supporting solid and liquid waste operations until new facilities including the TRU Waste Facility and Radioactive Liquid Waste Treatment Facility (RLTWF) can be brought online. This strategy has resulted in the Consolidated Waste Capability as a master plan for addressing all forms of waste from the systems of enduring nuclear facilities at Los Alamos. The priority project among these is the TRU Waste project that provides for staging, characterization, and shipping/receiving of TRU waste bound for the Waste Isolation Pilot Plant in Carlsbad. The TRU Waste capability must be reconstituted, commissioned, and in operation at a location outside of the current location. Through the integrated nuclear planning process, these refurbishments and or replacement projects are intended to be sequenced in order to address the plutonium capability and capacity required by the life extension and refurbishment requirements set forth in the NPR.